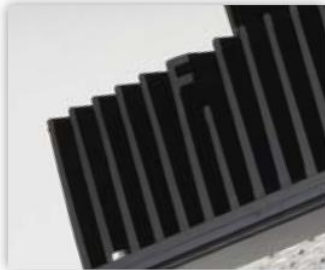
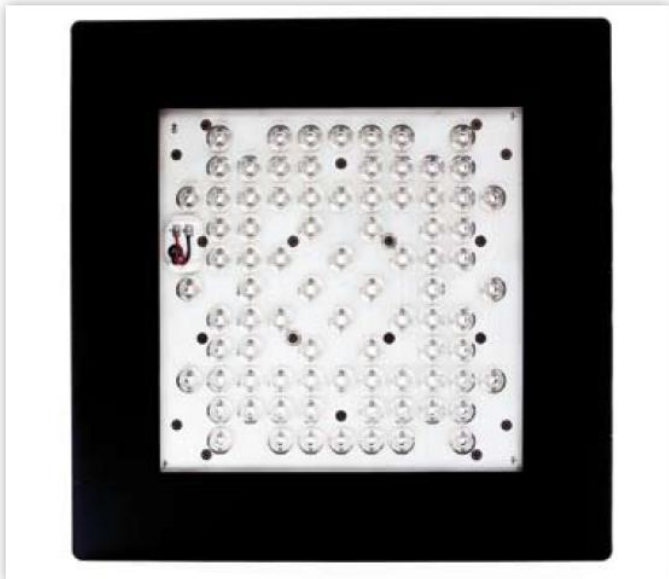




T: +44 (0) 1707 663 883  
 F: +44 (0) 1707 663 882  
 E: [info@orlight.com](mailto:info@orlight.com)  
 W: [www.orlight.com](http://www.orlight.com)

21B Cranborne Industrial Estate  
 Cranborne Road  
 Potters Bar, Herts  
 EN6 3JN, UK



### Benefits

- Lasts a minimum of 50.000 hours, which is over 6 years at 24-hour daily operation, equivalent to approximately 5 times the life span of a TL tube or HID bulb
- Long life span ensures lower maintenance and lamp replacement costs
- Low profile and flat lens guarantee even illumination of large surfaces, without annoying glare
- Excellent colour rendering for improved vision
- Instant on/off: LED does not require long start-up time after ignition to come to full brightness. Hot restrike: lamps can be switched on/off without taking into account a cooling-down period
- 0-10V dimming is optional. This way, the fixture can be used in combination with monitoring systems and controls, to achieve even higher energy savings and shorter pay-back time of your investment
- Vandalism and impact resistant

## LED Low Bay





LED LowBay combines high light output with low energy consumption, for use in medium to low bay applications. Ideal for use in parking garages, stock rooms and storage facilities as well as lighting of canopies, where low maintenance is required for continuous operation.

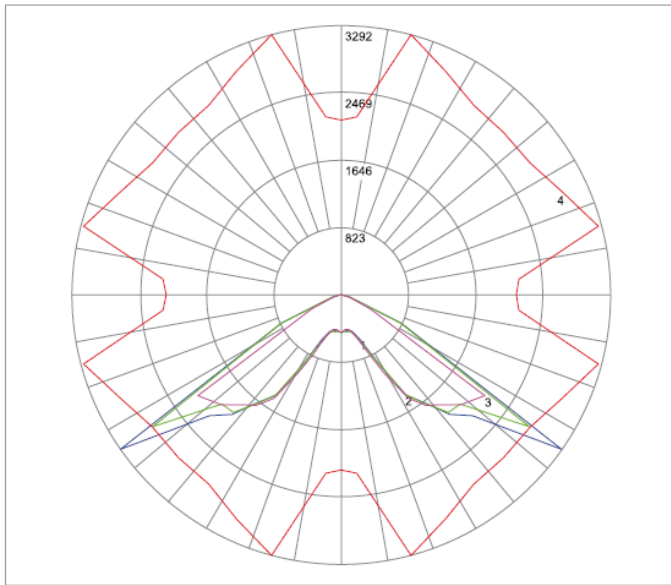
LED LowBay can be mounted in various ways to ceiling and walls, and is therefore universal in its application.

The integrated power supply is suited for wide Voltage operation from 100V-277V and complies with all applicable norms to ensure flawless operation.

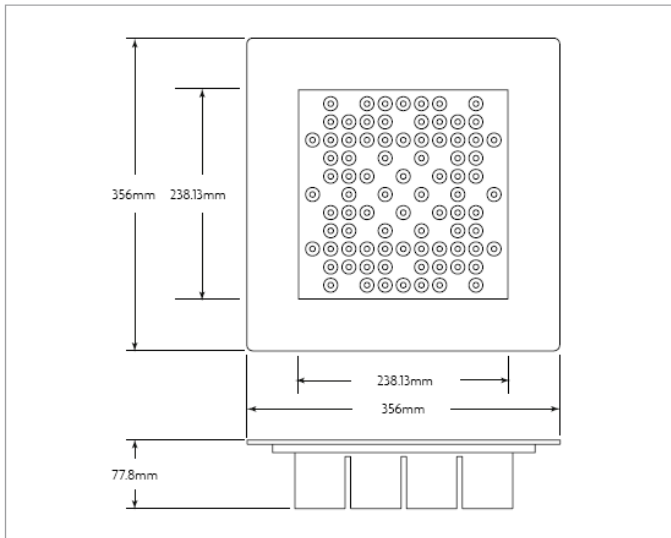
The fixture is available with a dimming function and/or occupancy sensors to provide additional energy saving options.

### Features

Lumen Output	6760 lm
Input Power	86W
Efficacy	79 lm/W
Colour Temperature (CCT)	6145K
Colour Rendering Index (CRI)	75
Rated Life	50.000 Hours @
L70	70% Lumen Maintenance
<b>Controls</b>	
Occupancy Sensor	Hi/Low 50% Output Power
Housing	Anodized Aluminium
Included standard	Black
Lens	Clear Polycarbonate
Mounting Options	Surface Mount
Dimensions	356x356x77.8mm w/o PSU 356x356x159.37mm w/PSU
Power Supply	127x112x47mm
Operating Temperature	-40°C to +40°C
Voltage	100-277 VAC @ 50-60 Hz
Rated Input Current	120V-0.7A 277V-0.3A
Rated Power Factor	> 0.9
Off State Power	Zero
Weight	13 kg w/PSU
Certification	   
Environment	IP66



Maximum Candela = 3292 Located At Horizontal Angle = 75, Vertical Angle = 55  
 # 1 - Vertical Plane Through Horizontal Angles (75 - 255) (Through Max. Cd.) : BLUE  
 # 2 - Vertical Plane Through Horizontal Angles (45 - 225) : GREEN  
 # 3 - Vertical Plane Through Horizontal Angles (0 - 180) : MAGENTA  
 # 4 - Horizontal Cone Through Vertical Angle (55) (Through Max. Cd.) : RED



Dimensions shown in mm

### Luminance Data (cd/sq.m)

Angle In Degrees	Average 0°	Average 45°	Average 90°
45°	45,525	46,208	44,519
55°	71,030	79,480	72,833
65°	28,933	66,191	36,971
75°	8,259	12,252	9,669
85°	7,067	9,014	8,857

### Zonal Lumen Summary

Zone	Lumens	% Fixt
0-30	532.5	7.9
0-40	1435	21.2
0-60	5165	76.4
0-90	6764	100
60-90	1598	23.6
0-180	6764	100.0

Mounting Surface

